

4

3

2

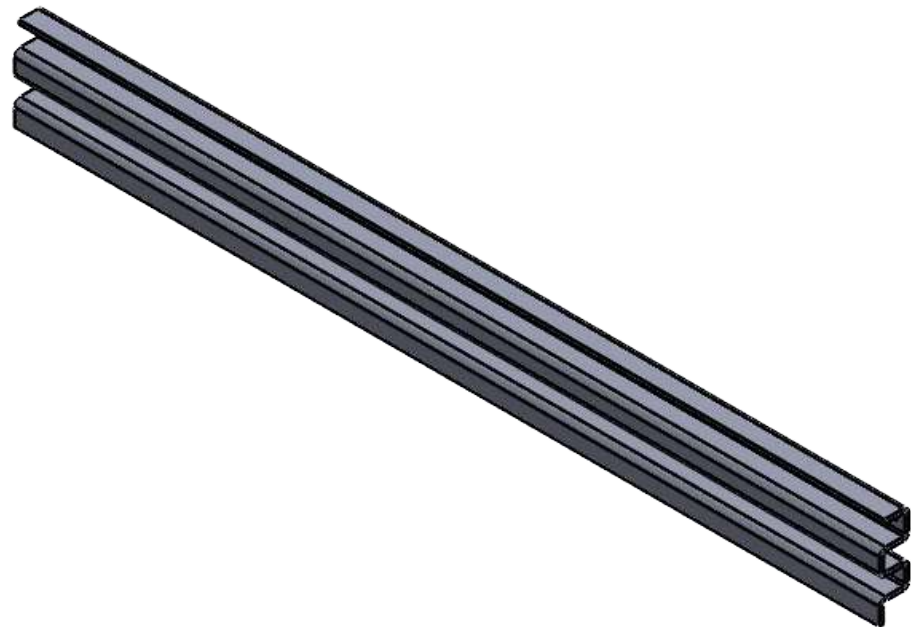
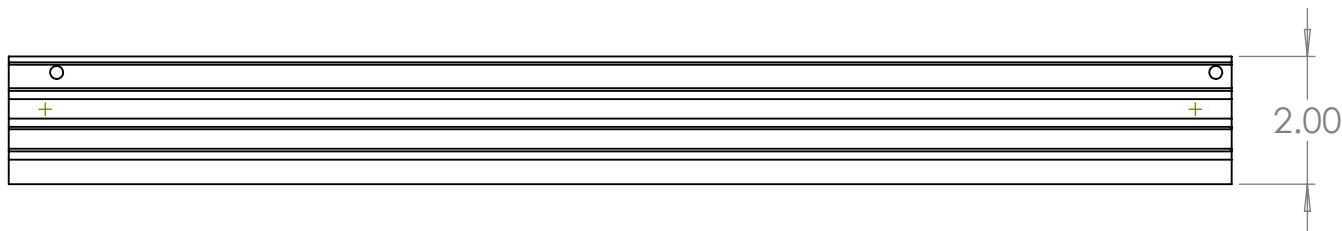
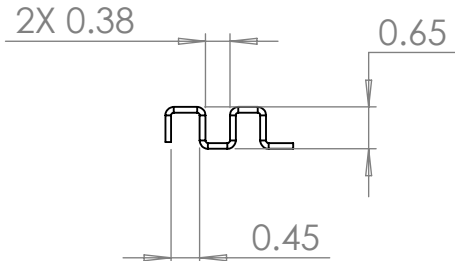
1

B

B

A

A



- NOTES: UNLESS OTHERWISE SPECIFIED.
1. PARAMETRIC MODEL. ALL DIMENSIONS FURTHER SPECIFIED IN 003-00087.
 2. FLAT PATTERN FOR PART SPECIFIED ON LAST SHEET OF DRAWING.
 3. PART SHALL BE FREE OF ANY SHARP EDGES AND BURRS.
 4. PART TO BE CLEANED OF ALL OIL AND DEBRIS.
 5. MATERIAL: A1008 STEEL
 6. FINISH: NONE
 7. GAUGE: 13
 8. PART SHALL NOT BE MODIFIED BY ANY PARTY OUTSIDE PAPERLESS PARTS, INC UNLESS WRITTEN OR EXPRESS APPROVAL HAS BEEN PERMITTED FOR THE PART.

PROPRIETARY AND CONFIDENTIAL
THE INFORMATION CONTAINED IN THIS
DRAWING IS THE SOLE PROPERTY OF
PAPERLESS PARTS, INC. ANY
REPRODUCTION IN PART OR AS A WHOLE
WITHOUT THE WRITTEN PERMISSION OF
PAPERLESS PARTS, INC IS
PROHIBITED.

UNLESS OTHERWISE SPECIFIED:

DIMENSIONS ARE IN INCHES
TOLERANCES:
ANGULAR: MACH $\pm 1.0^\circ$
BEND $\pm 0.5^\circ$
ONE PLACE DECIMAL ± 0.1
TWO PLACE DECIMAL ± 0.05

INTERPRET GEOMETRIC
TOLERANCING PER: ASME Y14.5
MATERIAL
A1008 STEEL
FINISH
NONE

DO NOT SCALE DRAWING

NAME
NM

DATE
8/30/2024

DRAWN
CHECKED
ENG APPR.
MFG APPR.

Q.A.

COMMENTS:

paperlessPARTS

TITLE:
**SIDE BRACE, LARGE VENTS,
FULL SERVER RACK**

SIZE
B

DWG. NO.
003-00087

REV
000

SCALE: NTS

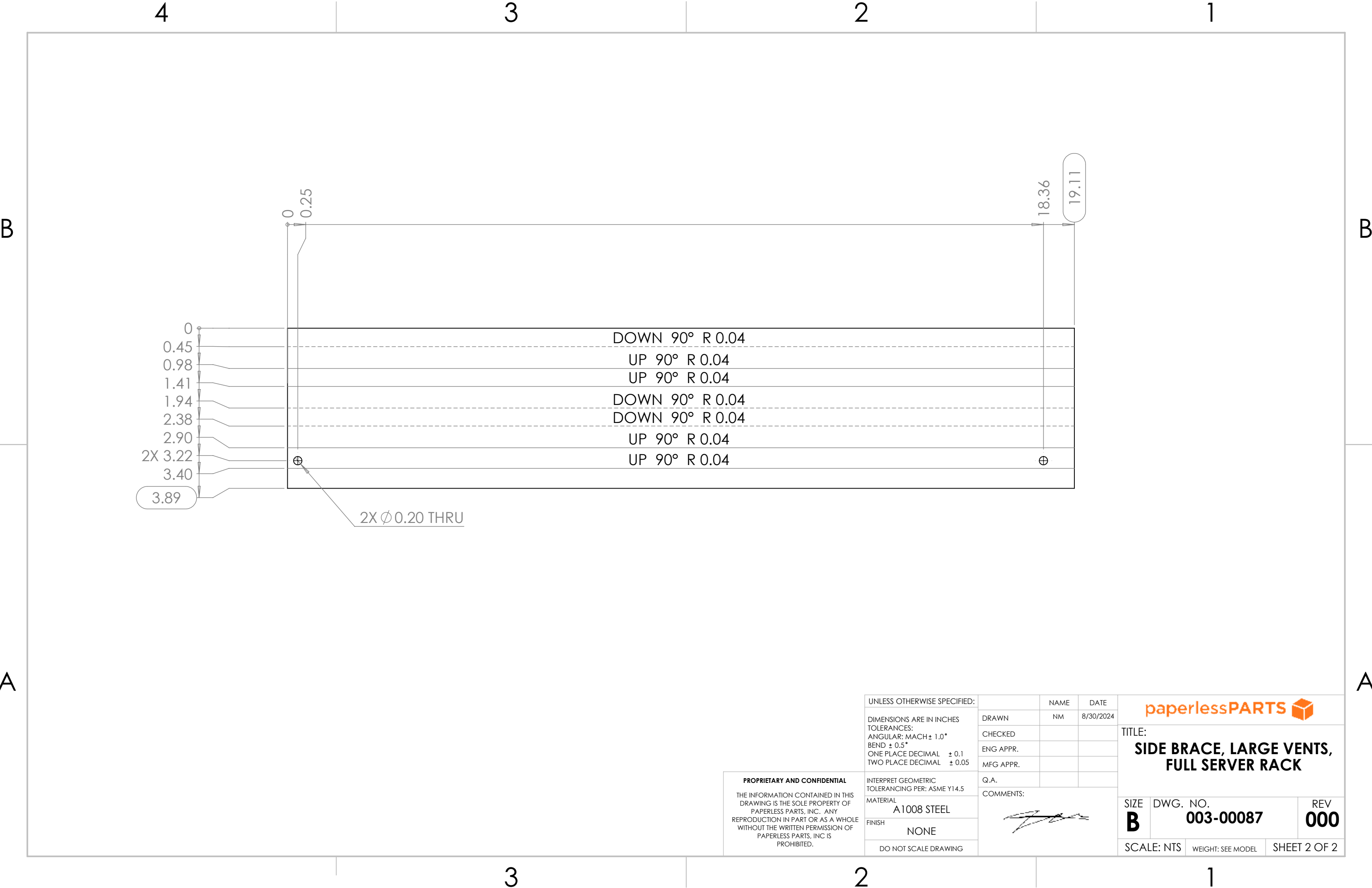
WEIGHT: SEE MODEL

SHEET 1 OF 2

3

2


1



PROPRIETARY AND CONFIDENTIAL
THE INFORMATION CONTAINED IN THIS
DRAWING IS THE SOLE PROPERTY OF
PAPERLESS PARTS, INC. ANY
REPRODUCTION IN PART OR AS A WHOLE
WITHOUT THE WRITTEN PERMISSION OF
PAPERLESS PARTS, INC IS
PROHIBITED.

UNLESS OTHERWISE SPECIFIED:	
DIMENSIONS ARE IN INCHES	
TOLERANCES:	
ANGULAR: MACH ± 1.0°	
BEND ± 0.5°	
ONE PLACE DECIMAL	± 0.1
TWO PLACE DECIMAL	± 0.05
INTERPRET GEOMETRIC	
TOLERANCING PER: ASME Y14.5	
MATERIAL	
A1008 STEEL	
FINISH	
NONE	
DO NOT SCALE DRAWING	

NAME	DATE
NM	8/30/2024



TITLE:

**SIDE BRACE, LARGE VENTS,
FULL SERVER RACK**

SIZE B	DWG. NO. 003-00087	REV 000
------------------	------------------------------	-------------------

SCALE: NTS	WEIGHT: SEE MODEL	SHEET 2 OF 2
------------	-------------------	--------------